



INALA  
COMMUNITY HOUSE

Out Of  
Home Care



# Your Carers Newsletter

## Departmental Updates

### Fortnightly carer allowance rates

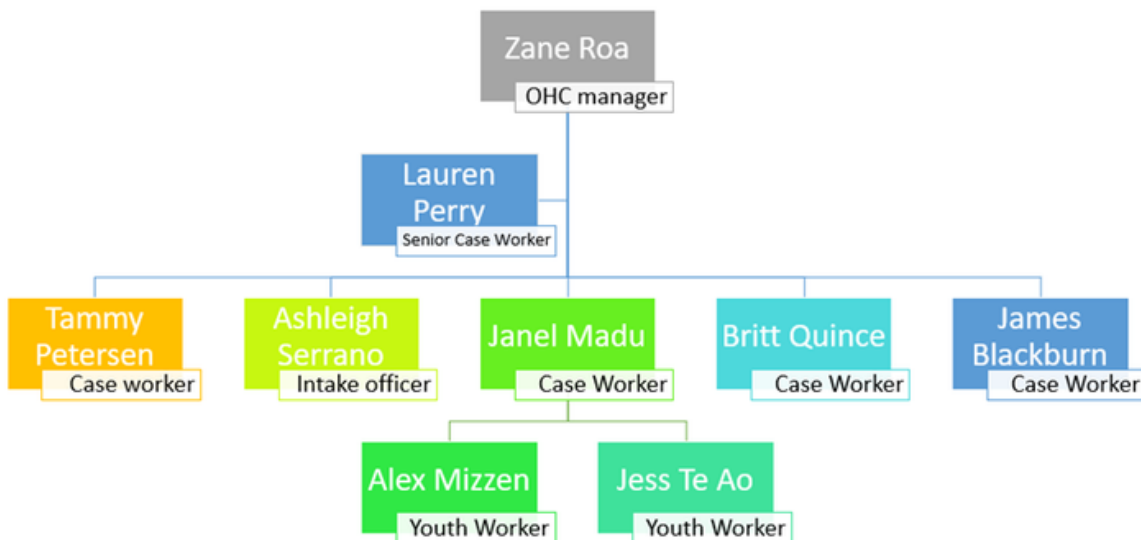
Foster carer allowance rates have changed as of 1st January 2024. The allowance is for approved foster and kinship carers. You can find out more about the current rates and other information relating to allowances and other entitlements below.



Queensland  
Government

### Team Update

Towards the end of last year, you may have seen some new faces in the team. We had Sophie who moved onto a passionate role in counselling, Jess who started in November, and then our new case worker Tammy who started just before Christmas. We wanted you to see the team structure now as a full team of 9.



## Carer Compliance

If you have not yet completed the hope and healing training, please reach out to your caseworker to support you with this. This is a mandatory training that all carers are required to do.

You can find more information about this program [here](#).





INALA  
COMMUNITY HOUSE

Out Of  
Home Care



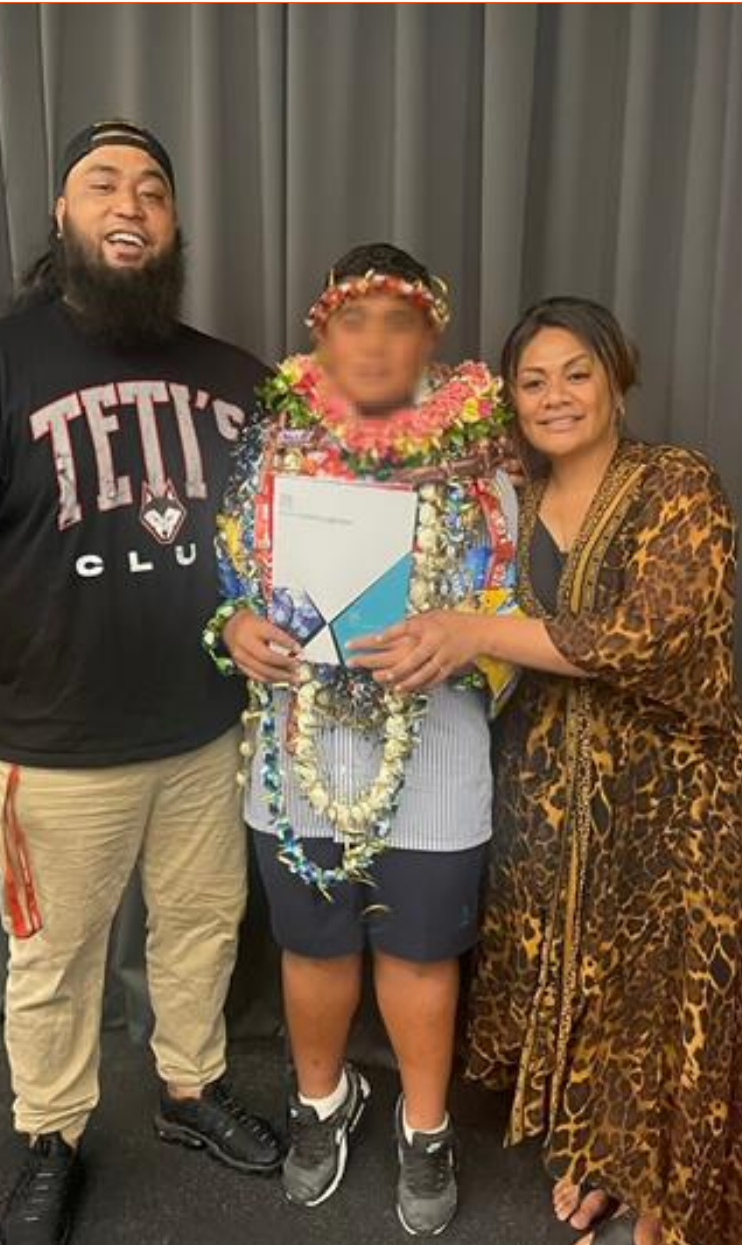
## Carer Spotlight

Selu has been a kinship carer for over 8 years. She alongside her partner Terry love being able to provide a safe and stable home environment for the children. Having them grow up together under one roof is really rewarding.

Some of the challenges they face as carers include some of the outside influences in their lives. This can be troubling when trying to explain boundaries and rules to their household, knowing that many other families may not operate in the same way. They're working to strike a good balance of social freedom and maintaining boundaries for their family's safety.

They love doing activities together and often invite their children's friends to join in on the activities as well as sleep overs. Selu and Terry do not classify themselves as carers - as this can sometimes connote an opportunity or career choice. They consider all children in their care as their children. They say that "Love is love, and this is our family".

We love your approach to caring guys and appreciate your example of love and kindness towards your children.



## Do you know anyone who wants to be a carer?

Our team is constantly on the look out for more carers to join our amazing pool of foster and kinship carers. If you know someone that has expressed an interest to be a carer, please let them know that we'd love to talk to them about what it means to be a foster carer.



INALA  
COMMUNITY HOUSE

Out Of  
Home Care



## Achieving Permanency Workshop



This program is run by Queensland Foster and Kinship Care (QFKC).

As a joint partnership with Kummara and Infinity Community Solutions, we deliver the QFKC's Achieving Permanency training module which seeks to inform Foster and Kinship Care agency staff and carers about how permanency is achieved for children and young people in care.



## Upcoming Training & Events

We have partnered with Queensland Foster and Kinship care (QFKC) to bring this training on achieving permanency.

**Please ensure that you RSVP for this event!**

If you're unable to make the training, please follow the link below which will take you to a condensed version of the training via [YouTube](#).

## Training Opportunity

Circle of Security (COS) is a well known, reputable parenting programme available to carers. This relationship based programme helps carers to understand their foster children's behavioural and emotional needs; and helps children to feel safer and more secure in your care. Evolve Therapeutic Services (ETS) is holding a COS training programme starting on the 1st of February. You can register by emailing [here](#)



## Event at Forest Lake Shopping Centre

Our intake officer Ashleigh alongside one of our case workers Tammy will be at the Forest Lake Shopping Centre this week on Friday to promote our services and seek to talk to people who have ever contemplated becoming a carer.

We are taking the opportunity to tell people about our local services whilst trying to meet the demands of a very saturated child protection system.

If you happen to be in the area, Ash and Tammy will be happy to see you!

Furthermore, if you know anyone who might be interested in becoming a carer, please have them catch up with our team.



**INLA  
COMMUNITY HOUSE**

**Out Of  
Home Care**



Queensland Foster and Kinship Care

**QUEENSLAND FOSTER AND KINSHIP CARE CONFERENCE**  
3 - 5 MAY 2024

REGISTRATION IS  
**NOW OPEN**

**REGISTER NOW** >  
[www.qfkc.com.au/events](http://www.qfkc.com.au/events)

Visit the QFKC Conference 2024 website and find out more about the conference!

Discover the conference venue, keynote presentations and workshops, speakers and so much more!

Registration Period  
**15th Jan - 14th April 2024**

**INTRODUCING OUR KEYNOTE SPEAKERS**

**MARTY WILSON**  
CHANGE WITHOUT FEAR

**AUNTY BRENDA**  
THE LAST DAUGHTER

07 3256 6166 | [events@qfkc.com.au](mailto:events@qfkc.com.au) | [www.qfkc.com.au/events](http://www.qfkc.com.au/events)

## QFKC conference registrations are open

The QFKC conference will be held at Seaworld in the Gold Coast this year, and registrations are now open and will close from the 14th of April.

If you would like to attend, simply scan the QR code and register online for the event.

Its looking to be a widely attended event with some great speakers, fantastic networking opportunities, and some shared understanding of some challenges that carers may encounter.

## Carer Calendar of Events

We have planned out a number of events this year. This yearly calendar will give you some ideas about what is happening throughout the year, but specific details about the events will still be sent to you closer to the date so that you know exactly what is happening in the service. You can access the calendar [here](#)



## Feedback & Complaints

Our community of carers is so important and we want to ensure you have the opportunity to share any feedback or concerns you may have. Follow the link to access our [feedback page](#).