



INALA  
COMMUNITY HOUSE

Out Of  
Home Care



# Your Carers Newsletter

## Departmental Updates

The department has recently changed its name and is now known as "The Department of Child Safety, Seniors, and Disability Services. There are no specific changes that will affect you on a day-to-day basis.

The department are currently seeking feedback from young people in care. As a carer, you're able to support your child/ren to complete this survey. They'll receive a gift card as a thank you for participating. For more information, please contact your caseworker.



Queensland  
Government



## Team Update: Meet Jess

I've just started as a youth worker at Inala Community House and work with young people and their families to help them overcome barriers to success and well-being.

### What do you wish people knew about your role?

Youth workers are important role models in a young person's life and provide young people with fundamental life skills

### What helps you get through the tough days?

Going for a walk really helps clear my head and helps me reset

### What is something interesting about yourself?

I love to bring positive energy!

## Blocked Trust Carer Training

Thank you to those who attended our carer support group - Training with Evolve Therapeutic Services was great as we learnt about how blocked trust can lead to blocked care.

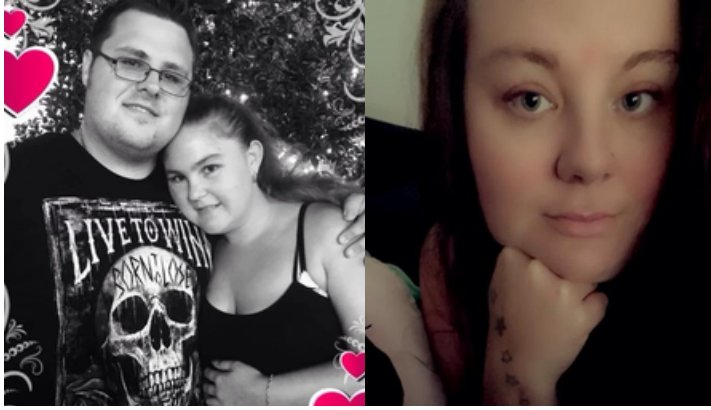
Blocked Trust can come from children who have experienced trauma in their lives which can lead to carers feeling disconnected resulting in Blocked care towards the children.

We learnt how to overcome these challenges!



# Your Carer Newsletter

## Carer Spotlight



### Meet Rebecca, Donna + Aemen

The most rewarding thing about being carers is seeing the kids grow up in a safe and loving environment with family. We value our children's expression of self and being a part of the decisions that affect them. This can be a challenge with so many voices needing to be heard. We are devoted to the kids and seeing their development and successes keeps us going through the challenging times.

Donna and Aemen live together with Rebecca and their respective children and the kinship children that they are collectively caring for. We're super grateful for the sacrifice these carers make to provide a safe and loving home for the young people they're caring for.

Being in a big family comes with both benefits and challenges, so we've been working together with these carers, and the department to ensure that sufficient support is in place to make this placement a success!

These carers do a fantastic job of collaborating and working together to meet the children's needs!  
Thanks Guys!

## Upcoming Training & Events

We have the following events coming up over the next few months:

- October - Partners in Care meeting
- November - Evening BBQ event - Details to follow
- December - Carers Christmas Party
- December - Kids Christmas Party

We will complete some planning for events in the new year. We're keen to hear from you if you have some ideas about activities for 2024.

Simply inform your case worker so that they can let us know and we can implement any changes into our schedule.

## Carer Connect

Carer Connect is an app that foster and kinship carers can use to submit important information about a child in care in an efficient way.



Please contact your case worker for more information about how to use Carer Connect.

## Good News O'Clock

*Everyone needs a house to live in, but a supportive family is what builds a home.*

## Feedback & Complaints

Our community of carers is so important and we want to ensure you have the opportunity to share any feedback or concerns you may have. You can give feedback in several ways.

- Call and speak to a member of our team on **(07) 3372 1711**
- Submit your feedback via email at [reception@ich.org.au](mailto:reception@ich.org.au) or [complaints@ich.org.au](mailto:complaints@ich.org.au)
- Send through written feedback to PO BOX 4800, Forest Lake QLD 4078