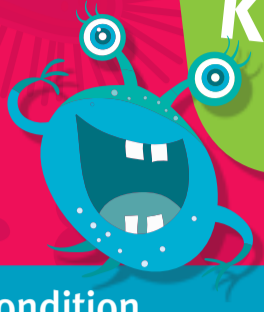


# Time Out

Keeping your child and other kids healthy!



This poster provides information on the recommended minimum exclusion periods for infectious conditions and will assist medical practitioners, schools, pre-schools and childcare centres to meet the requirements of the *Public Health Act 2005*.<sup>1</sup>

Condition	Person with the infection	Those in contact with the infected person <sup>2</sup>
<b>Chickenpox (varicella)</b>	<b>EXCLUDE</b> until all blisters have dried. For non-immunised children, this is usually 5 days after the rash first appears, and less for immunised children.	<b>EXCLUSION MAY APPLY</b> <b>EXCLUDE</b> non-immune pregnant women and any child with immune deficiency or receiving chemotherapy. <i>Contact your Public Health Unit for specialist advice.</i> Varicella can be reactivated in older children and adults as Shingles. See below.
<b>Cold sores (herpes simplex)</b>	<b>NOT EXCLUDED</b> if the person can maintain hygiene practices to minimise the risk of transmission. Young children unable to comply with good hygiene practices should be excluded while sores are weeping. Sores should be covered with a dressing where possible.	<b>NOT EXCLUDED</b>
<b>Conjunctivitis</b>	<b>EXCLUDE</b> until discharge from eyes has ceased unless a doctor has diagnosed non-infectious conjunctivitis.	<b>NOT EXCLUDED</b>
<b>Cytomegalovirus (CMV)</b>	<b>NOT EXCLUDED</b> Pregnant women should consult with their doctor.	<b>NOT EXCLUDED</b> Pregnant women should consult with their doctor.
<b>Diarrhoea<sup>3</sup> and/or Vomiting including:</b> <ul style="list-style-type: none"> <li>• amoebiasis</li> <li>• campylobacter</li> <li>• cryptosporidium</li> <li>• giardia</li> <li>• rotavirus</li> <li>• salmonella</li> <li>• viral gastroenteritis</li> </ul> <b>but excluding:</b> <ul style="list-style-type: none"> <li>• norovirus</li> <li>• shigellosis</li> <li>• toxin-producing forms of E.coli (STEC)</li> </ul> <i>See specific information below</i>	<b>NOT EXCLUDED</b>	
<b>Enterovirus 71 (EV71 neurological disease)</b>	<b>EXCLUDE</b> until written medical clearance is received confirming the virus is no longer present in the person's bowel motions.	<b>NOT EXCLUDED</b>
<b>Fungal infections of the skin and nails (ringworm/tinea)</b>	<b>EXCLUDE</b> until the day after antifungal treatment has commenced. (No exclusion for thrush).	<b>NOT EXCLUDED</b>
<b>Glandular fever (mononucleosis, Epstein-Barr virus)</b>	<b>NOT EXCLUDED</b>	<b>NOT EXCLUDED</b>
<b>German measles (rubella)<sup>4</sup></b>	<b>EXCLUDE</b> for 4 days after the onset of rash or until fully recovered, whichever is longer. Pregnant women should consult with their doctor.	<b>NOT EXCLUDED</b> Pregnant women and female staff of childbearing age should check their immunity with their doctor. <i>Contact your Public Health Unit for specialist advice.</i>
<b>Haemophilus influenzae type b (Hib)</b>	<b>EXCLUDE</b> until the person has completed a course of appropriate antibiotic treatment. <sup>5</sup> <i>Contact your Public Health Unit for specialist advice.</i>	<b>EXCLUSION MAY APPLY</b> <i>Contact your Public Health Unit for specialist advice.</i>
<b>Hand, foot and mouth disease (EV71)</b>	<b>EXCLUDE</b> until all blisters have dried.	<b>NOT EXCLUDED</b>
<b>Head lice</b>	Exclusion is not necessary if effective treatment is commenced before next attendance day (i.e. the child does not need to be sent home immediately if head lice are detected).	<b>NOT EXCLUDED</b>
<b>Hepatitis A<sup>4</sup></b>	<b>EXCLUDE</b> until at least 7 days after the onset of jaundice or dark urine, or for 2 weeks after onset of first symptoms if no jaundice or dark urine.	<b>NOT EXCLUDED</b> <i>Contact your Public Health Unit for specialist advice about vaccination or treatment for children and staff in the same room or group, children transferring to another centre and new enrolments.</i>
<b>Hepatitis B and C</b>	<b>NOT EXCLUDED</b> Cover open wounds with a waterproof dressing.	<b>NOT EXCLUDED</b>

## Footnotes

1. Observing the exclusion period meets the intent of the *Public Health Act 2005* for a person to be non-infectious.
2. The definition of 'contact' will vary between diseases and is sometimes complex. If unsure, contact your local Public Health Unit.
3. Diarrhoea definition is: 3 or more loose stools or bowel movements in a 24 hour period that are different from normal and/or escapes a child's nappy.
4. Doctors should notify the local Public Health Unit as soon as possible if children or staff are diagnosed with these conditions.
5. Appropriate antibiotic treatment: this will vary between diseases. If unsure, contact your Public Health Unit.



Condition	Person with the infection	Those in contact with the infected person <sup>2</sup>
Hepatitis E	<b>EXCLUDE</b> until at least 2 weeks after the onset of jaundice.	<b>NOT EXCLUDED</b>
Human immunodeficiency virus (HIV/AIDS)	<b>NOT EXCLUDED</b> Cover open wounds with waterproof dressing.	<b>NOT EXCLUDED</b>
Influenza and influenza-like illness	<b>EXCLUDE</b> until symptoms have resolved, normally 5–7 days.	<b>NOT EXCLUDED</b>
Measles <sup>4</sup>	<b>EXCLUDE</b> for 4 days after the onset of the rash. <i>Contact your Public Health Unit for specialist advice.</i>	<b>EXCLUSION MAY APPLY</b> Vaccinated or immune contacts <b>NOT EXCLUDED</b> . <b>EXCLUDE</b> immuno-compromised contacts (including those receiving chemotherapy) until 14 days after the appearance of the rash in the last case. <b>EXCLUDE</b> non- or incompletely vaccinated contacts, without evidence of immunity. <i>Contact your Public Health Unit for specialist advice.</i>
Meningitis (bacterial)	<b>EXCLUDE</b> until well and has received appropriate antibiotics. <sup>5</sup>	<b>NOT EXCLUDED</b>
Meningitis (viral)	<b>EXCLUDE</b> until well.	<b>NOT EXCLUDED</b>
Meningococcal infection <sup>4</sup>	<b>EXCLUDE</b> until 24 hours of appropriate antibiotics have been completed. <i>Contact your Public Health Unit for specialist advice.</i> <sup>5</sup>	<b>NOT EXCLUDED</b> <i>Contact your Public Health Unit for specialist advice about antibiotics and/or vaccination for close contacts.</i> <sup>5</sup>
Molluscum contagiosum	<b>NOT EXCLUDED</b>	<b>NOT EXCLUDED</b>
Mumps	<b>EXCLUDE</b> for 5 days after onset of swelling. Pregnant women should consult with their doctor.	<b>NOT EXCLUDED</b> Pregnant women should consult with their doctor.
Norovirus	<b>EXCLUDE</b> until there has been no diarrhoea or vomiting for 48 hours.	<b>NOT EXCLUDED</b>
Roseola, sixth disease	<b>NOT EXCLUDED</b>	<b>NOT EXCLUDED</b>
Scabies	<b>EXCLUDE</b> until the day after treatment has commenced.	<b>NOT EXCLUDED</b>
School sores (impetigo)	<b>EXCLUDE</b> until 24 hours of appropriate antibiotics have been completed. <sup>5</sup> Cover sores on exposed areas with a waterproof dressing until sores are dry, and encourage handwashing.	<b>NOT EXCLUDED</b>
Shiga toxin-producing E.coli (STEC)	<b>EXCLUDE</b> until diarrhoea has stopped and two samples have tested negative. <i>Contact your Public Health Unit for specialist advice.</i>	<b>EXCLUSION MAY APPLY</b> <i>Contact your Public Health Unit for specialist advice.</i>
Slapped cheek syndrome, fifth disease (parvovirus B19, erythema infectiosum)	<b>NOT EXCLUDED</b> Pregnant women should consult with their doctor.	<b>NOT EXCLUDED</b> Pregnant women should consult with their doctor.
Shigellosis	<b>EXCLUDE</b> until there has been no diarrhoea or vomiting for 48 hours <i>Contact your Public Health Unit for specialist advice.</i>	<b>EXCLUSION MAY APPLY</b> <i>Contact your Public Health Unit for specialist advice.</i>
Shingles (herpes zoster)	<b>EXCLUSION MAY APPLY</b> If blisters can be covered with a waterproof dressing, until they have dried <b>NOT EXCLUDED</b> . <b>EXCLUDE</b> if blisters are unable to be covered and until no new blisters have appeared for 24 hours.	<b>EXCLUSION MAY APPLY</b> <i>Contact your Public Health Unit for specialist advice, including advice for pregnant women and any person who is immuno-compromised (including receiving chemotherapy).</i>
Streptococcal sore throat (including scarlet fever)	<b>EXCLUDE</b> until 24 hours of appropriate antibiotics have been completed. <sup>5</sup>	<b>NOT EXCLUDED</b>
Tuberculosis (TB) <sup>4</sup>	<b>EXCLUDE</b> until written medical clearance is received from the relevant Tuberculosis Control Unit.	<b>NOT EXCLUDED</b>
Typhoid <sup>4</sup> and paratyphoid fever	<b>EXCLUDE</b> until diarrhoea has stopped and two samples have tested negative. <i>Contact your Public Health Unit for specialist advice.</i>	<b>EXCLUSION MAY APPLY</b> <i>Contact your Public Health Unit for specialist advice.</i>
Whooping cough (pertussis) <sup>4</sup>	<b>EXCLUDE</b> until 5 days after starting appropriate antibiotics or for 21 days from onset of cough. <sup>5</sup> <i>Contact your Public Health Unit for specialist advice.</i>	<b>EXCLUSION MAY APPLY</b> for those in contact with the infected person. <i>Contact your Public Health Unit for specialist advice regarding exclusion of non- or incompletely vaccinated contacts.</i>
Worms	<b>EXCLUDE</b> until diarrhoea has stopped for 24 hours and treatment has occurred.	<b>NOT EXCLUDED</b>



Some medical conditions require exclusion from school, childcare centres and other settings to prevent the spread of infectious diseases among staff and children.<sup>1</sup>

**For further information or advice about diseases or conditions not listed here:**

- Contact your nearest public health unit at: [www.health.qld.gov.au/system-governance/contact-us/contact/public-health-units](http://www.health.qld.gov.au/system-governance/contact-us/contact/public-health-units)
- National Health and Medical Research Council publication: *Staying Healthy – Preventing infectious diseases in early childhood and education and care services, 5th edition:* [www.nhmrc.gov.au/guidelines-publications/ch55](http://www.nhmrc.gov.au/guidelines-publications/ch55)
- For fact sheets about various communicable diseases visit the Queensland Department of Health website at: <http://disease-control.health.qld.gov.au>



Use this QR Code to access a digital copy of this poster or visit: [www.health.qld.gov.au/publichealthact/contagious](http://www.health.qld.gov.au/publichealthact/contagious)